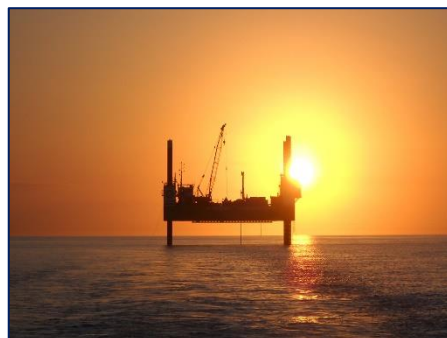
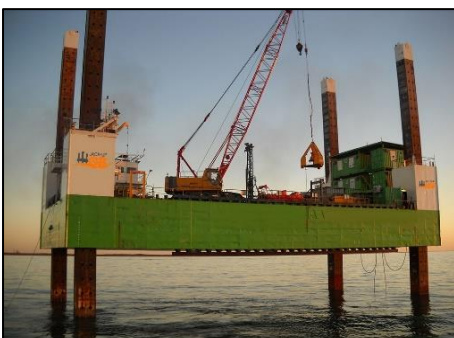


COMMANDER

40.9m x 20.0m 600t Jack Up Barge

SPECIALIST MARINE PLANT PROVIDERS TO CONSTRUCTION & ENERGY CLIENTS WITHIN THE INLAND / INSHORE, COASTAL AND OFFSHORE RENEWABLES SECTORS



**The UK's No.1 Choice for
Jack Up Barge Hire**

Commander



General

Type	Mono-hull 600t Self Elevating Platform
Classification	Bureau Veritas
Major Refit	2009

Main Dimensions

Length	40.9m
Breadth	20.0m
Depth	4.2m
Deck Area	600m ²
Max leg Length	42.00m
Moonpools	2 x 400mm Vertical,
Moonpools	2 x Inclined @ 23deg x 460mm & 30deg x 760mm

Jacking System

Jacking Speed	24m/hour
Type	Hydraulic Positive Engagement
Capacity	1,600 ton
Installed Power	300 Kw

Operating Conditions

Max Deck Load	600t
Operating Draft	3.05m max

Standard Equipment

Hydraulic Cabin, Navigation Shapes and Lights, Bollards, 6 x Mooring Winches 15t, Cables & Anchors, Auxiliary Crane 1.75t man riding

Optional Equipment

Accommodation up to 15 pax, Safety Boat, Work class Knuckle Boom Crane, Access Walkways, Cantilever Platforms