

MARITIM 3

28m x 19m x 5m Flat Top Spud Leg Barge

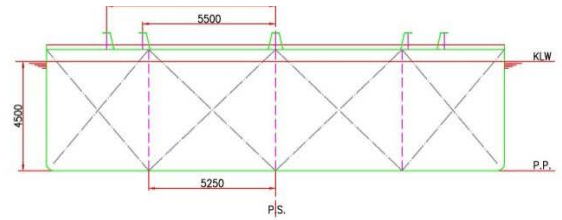
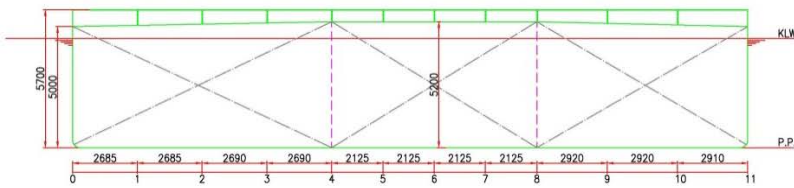
SPECIALIST MARINE PLANT PROVIDERS TO CONSTRUCTION & ENERGY CLIENTS WITHIN THE INLAND / INSHORE, COASTAL AND OFFSHORE RENEWABLES SECTORS



**The UK's No.1 Choice for
Transport & Crane Barge Hire**

www.jackupgb.com | enquiries@jackupgb.com

MARITIM 3



General

Type

Multi-Purpose Flat Top Transport Crane Barge

Classification



Main Dimensions

Length	28.0m
Breadth	19.0m
Depth	5.0m
Deck Area	532m ²
Max leg Length	30.0m
Leg Diameter	914mm

Operating Conditions

Gross Tonnage	1100tonnes
Point Load	15t/m ²
Max Crane Self Weight	300 tonnes

Standard Equipment

Mooring Bollards

Optional Equipment

Safety Boat, Knuckle Boom Crane, Access Walkways, Cantilever Platforms, Piling Gates, 4 x Mooring Winches, Cables & Anchors